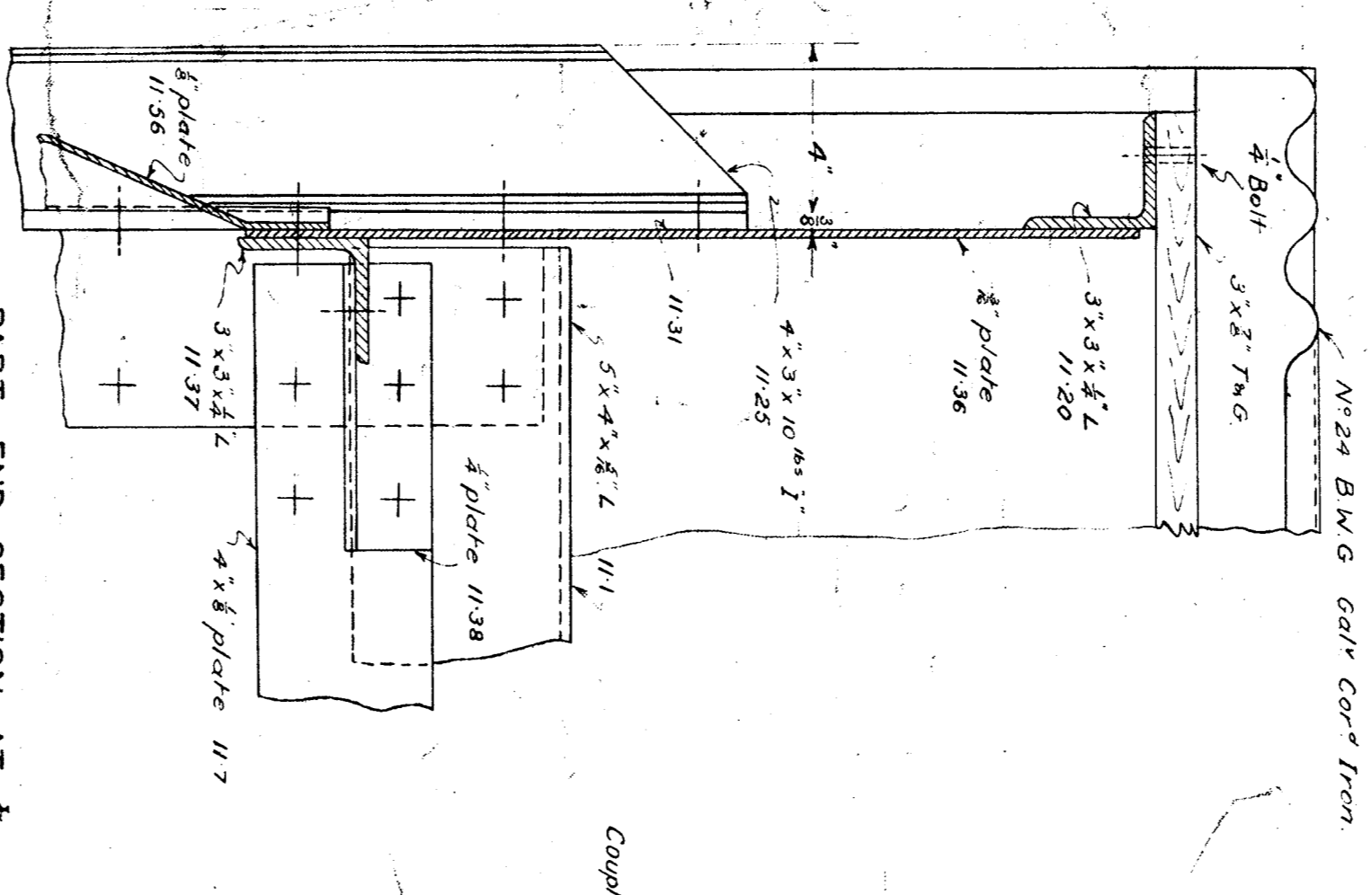
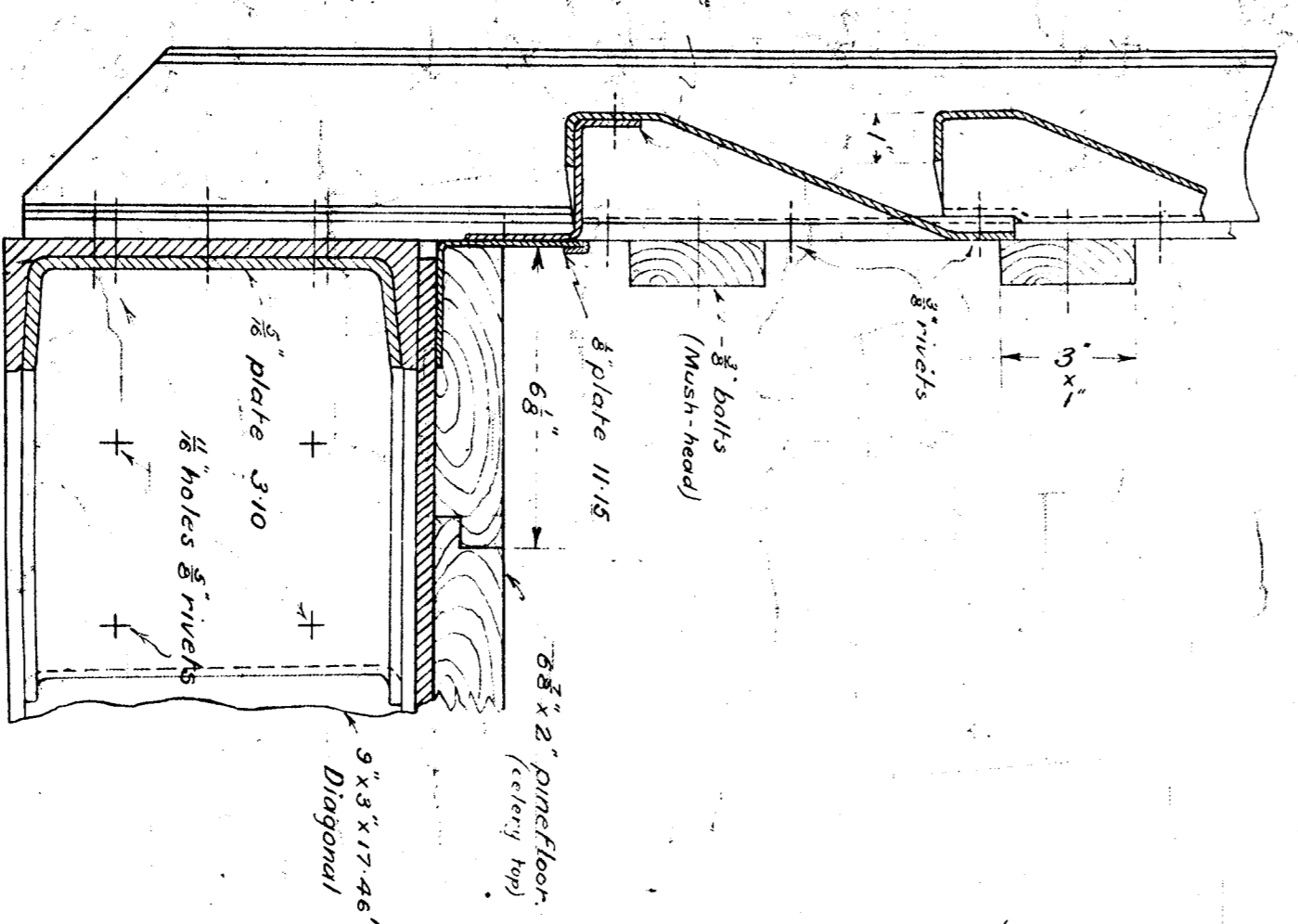


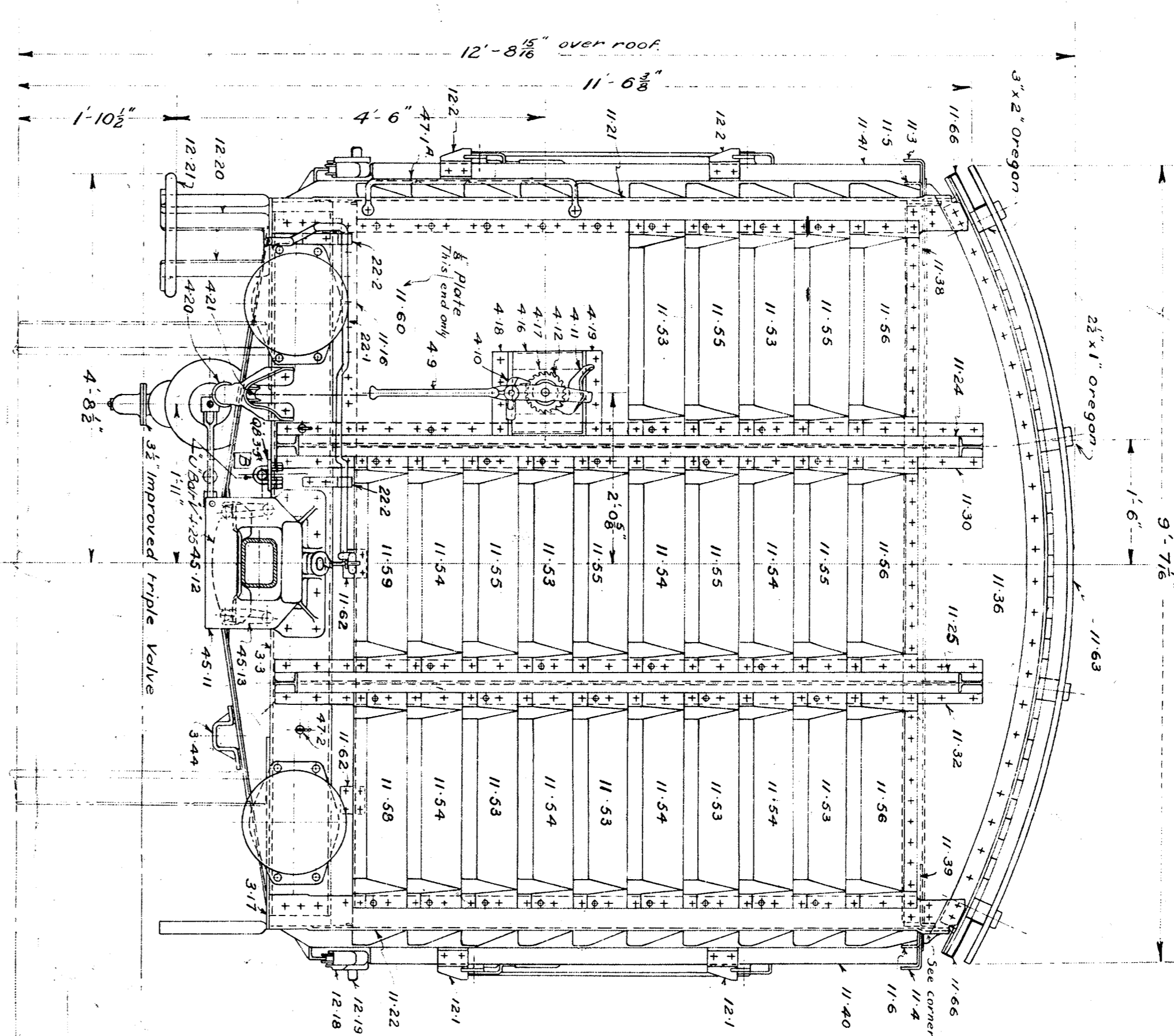
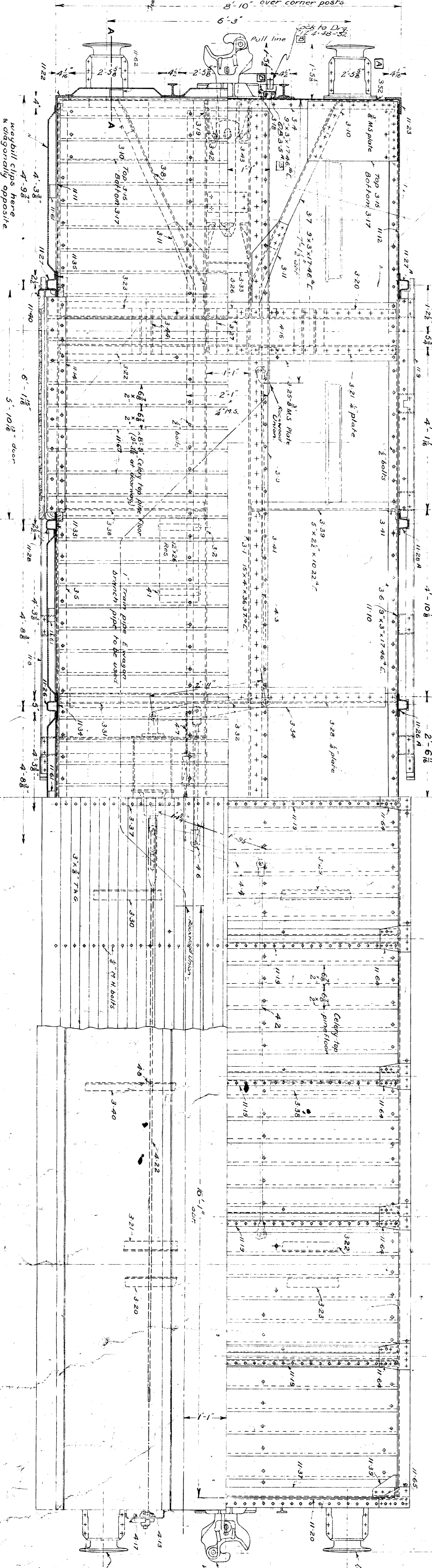
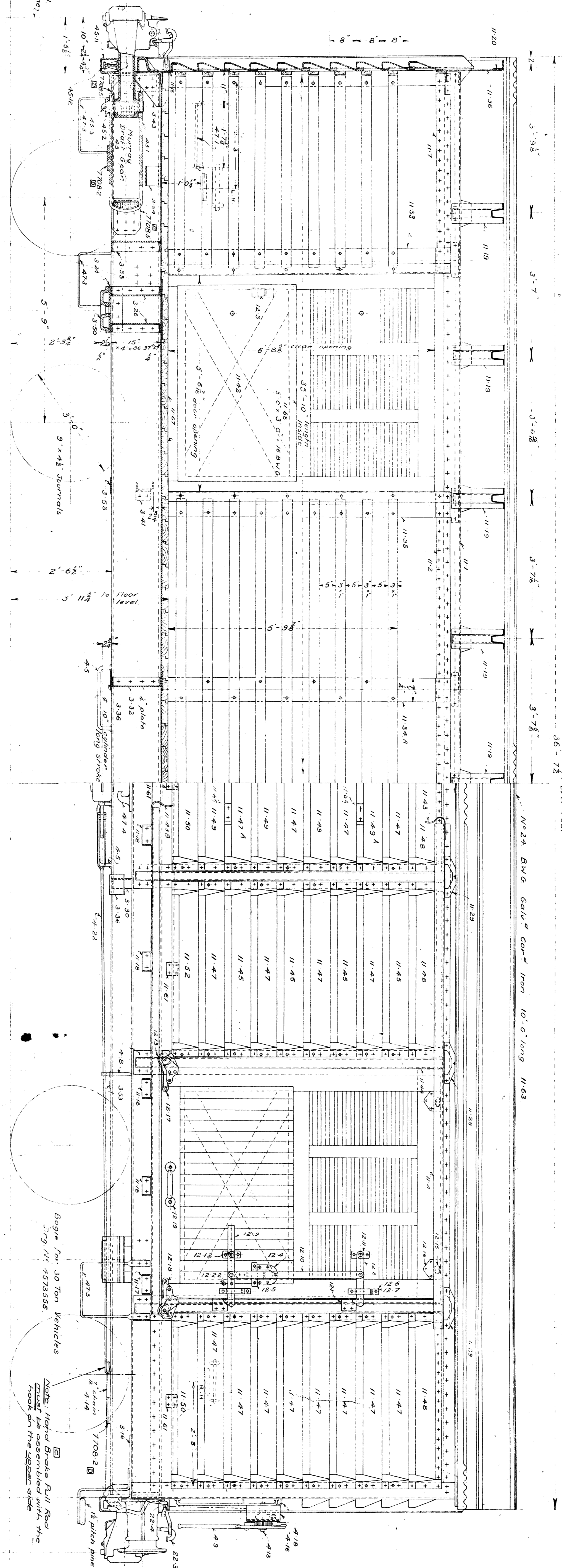
HORIZONTAL SECTION THROUGH SIDE & END AT CORNER.



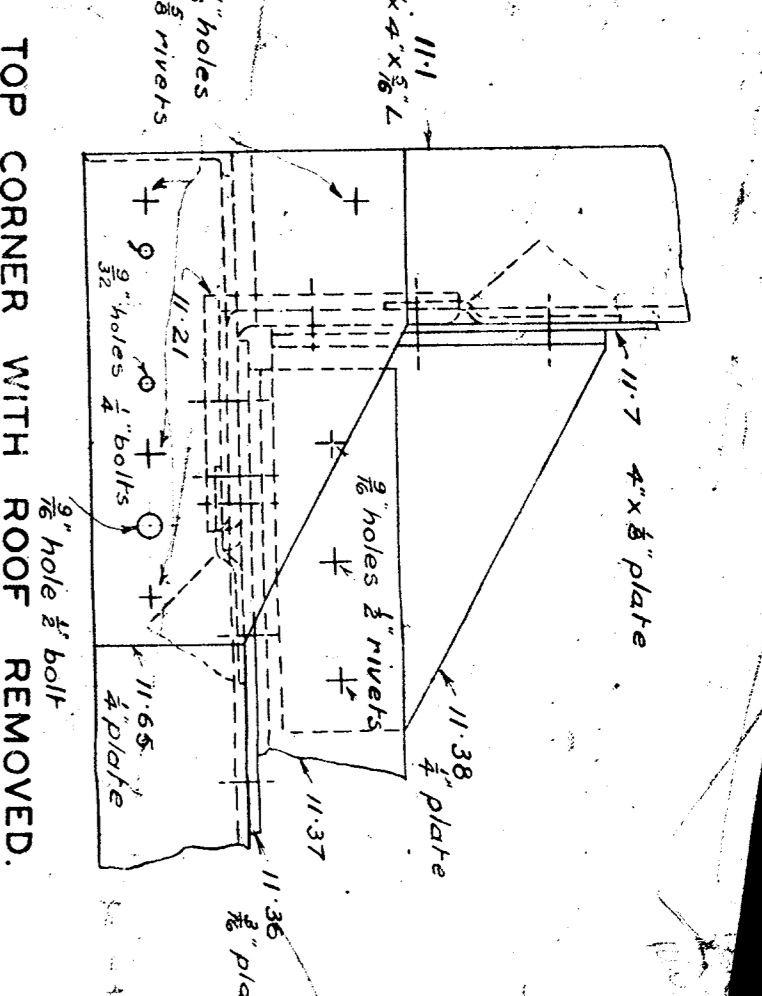
PART END SECTION AT E.



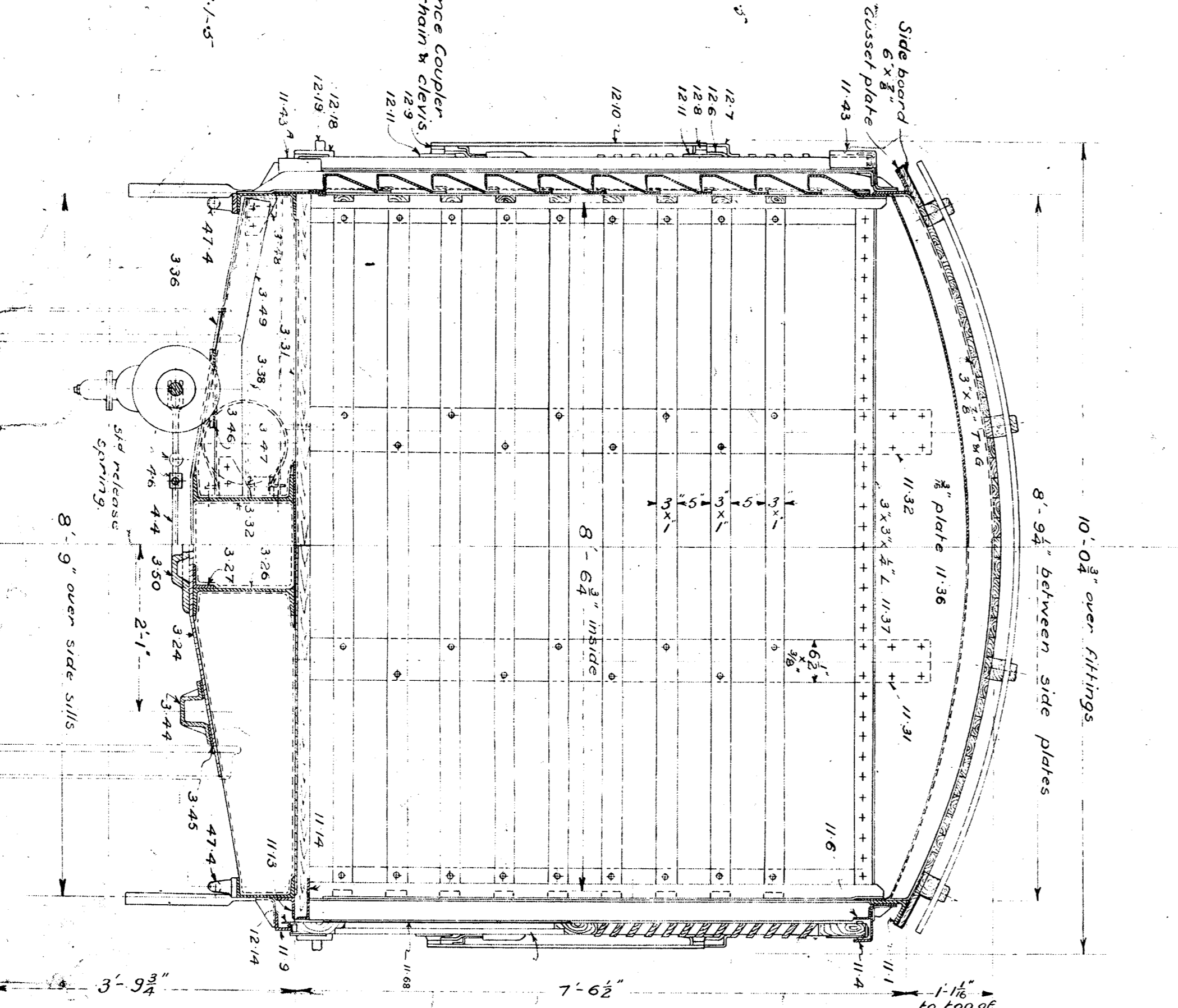
PART END SECTION AT A-A.



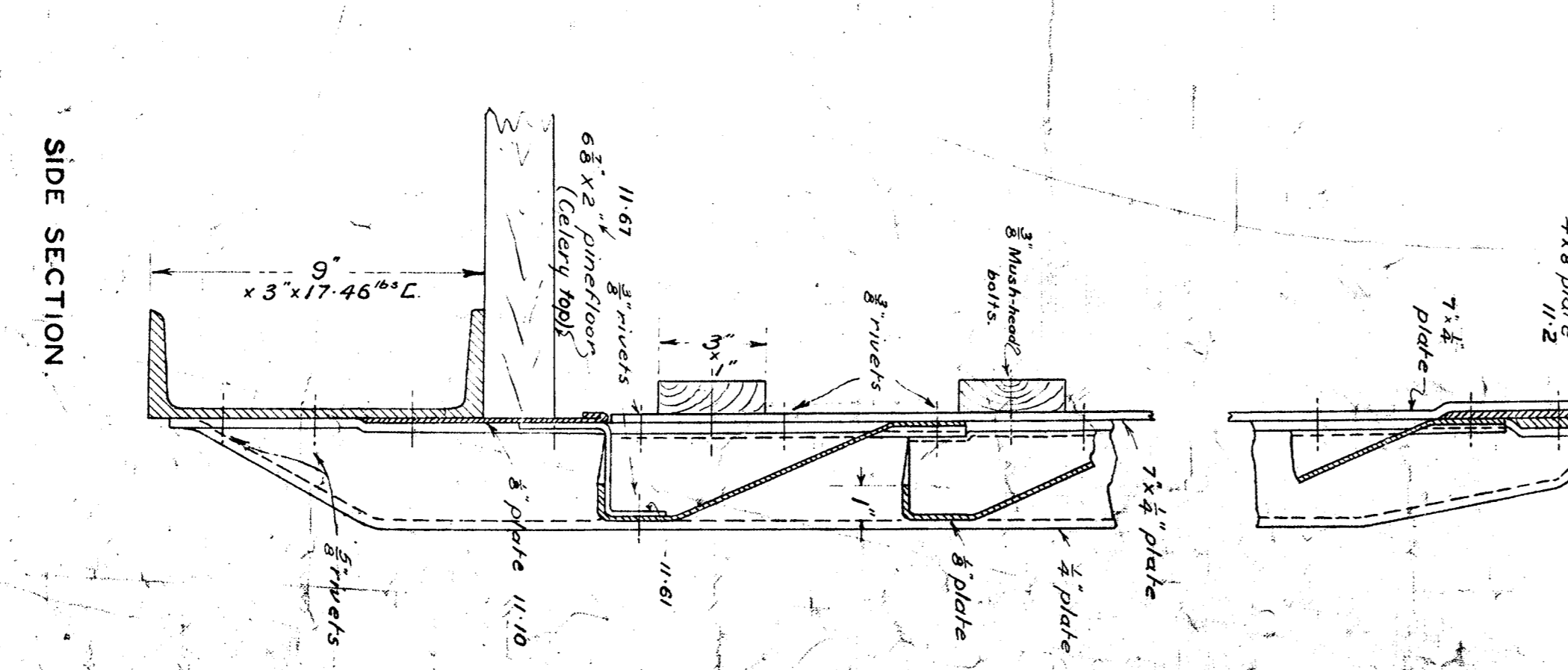
CORNER CONSTRUCTION AT SIDE & END PLATES.



TOP CORNER WITH ROOF REMOVED.



SECTION AT E OF WAGON. SECTION AT BOLSTER.



SIDE SECTION.

Item	Quantity	Unit	Notes
1. 2x4 Studs	100	ft	10' 0\"/>
2. 2x6 Rafters	50	ft	10' 0\"/>
3. 4x8 Planks	200	ft	10' 0\"/>
4. 2x8 Joists	100	ft	10' 0\"/>
5. 2x10 Joists	50	ft	10' 0\"/>
6. 2x12 Joists	25	ft	10' 0\"/>
7. 2x14 Joists	12.5	ft	10' 0\"/>
8. 2x16 Joists	6.25	ft	10' 0\"/>
9. 2x18 Joists	3.125	ft	10' 0\"/>
10. 2x20 Joists	1.5625	ft	10' 0\"/>

VICTORIAN RAILWAYS

NO. 30 TON (4 DOOR) DRN NO. 1
ENGINEER: CHIEF ENGINEER

GENERAL ARRANGEMENT